

INAPSINE- droperidol injection
Akorn, Inc.

Inapsine®

(Droperidol) Injection 1 mL and 2 mL

FOR INTRAVENOUS OR INTRAMUSCULAR USE ONLY

Rx only

WARNING

Cases of QT prolongation and/or torsade de pointes have been reported in patients receiving INAPSINE at doses at or below recommended doses. Some cases have occurred in patients with no known risk factors for QT prolongation and some cases have been fatal.

Due to its potential for serious proarrhythmic effects and death, INAPSINE should be reserved for use in the treatment of patients who fail to show an acceptable response to other adequate treatments, either because of insufficient effectiveness or the inability to achieve an effective dose due to intolerable adverse effects from those drugs (see Warnings, Adverse Reactions, Contraindications, and Precautions).

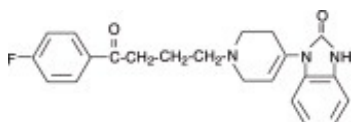
Cases of QT prolongation and serious arrhythmias (e.g., torsade de pointes) have been reported in patients treated with INAPSINE. Based on these reports, all patients should undergo a 12-lead ECG prior to administration of INAPSINE to determine if a prolonged QT interval (i.e., QTc greater than 440 msec for males or 450 msec for females) is present. If there is a prolonged QT interval, INAPSINE should NOT be administered. For patients in whom the potential benefit of INAPSINE treatment is felt to outweigh the risks of potentially serious arrhythmias, ECG monitoring should be performed prior to treatment and continued for 2 to 3 hours after completing treatment to monitor for arrhythmias.

INAPSINE is contraindicated in patients with known or suspected QT prolongation, including patients with congenital long QT syndrome.

INAPSINE should be administered with extreme caution to patients who may be at risk for development of prolonged QT syndrome (e.g., congestive heart failure, bradycardia, use of a diuretic, cardiac hypertrophy, hypokalemia, hypomagnesemia, or administration of other drugs known to increase the QT interval). Other risk factors may include age over 65 years, alcohol abuse, and use of agents such as benzodiazepines, volatile anesthetics, and IV opiates. Droperidol should be initiated at a low dose and adjusted upward, with caution, as needed to achieve the desired effect.

DESCRIPTION

INAPSINE contains droperidol, a neuroleptic (tranquilizer) agent. INAPSINE® (droperidol) Injection is available in ampules and vials. Each milliliter contains 2.5 mg of droperidol in an aqueous solution adjusted to pH 3.4 ± 0.4 with lactic acid. Droperidol is chemically identified as 1-(1-[3-(p-fluorobenzoyl) propyl]-1,2,3,6-tetrahydro-4-pyridyl)-2-benzimidazolinone with a molecular weight of 379.43. The structural formula of droperidol is:



Molecular formula: C₂₂H₂₂FN₃O₂, partition coefficient in n-octanol: water: 3.46, pKa: 7.46

INAPSINE is a sterile, non-pyrogenic, aqueous solution for intravenous or intramuscular injection.

CLINICAL PHARMACOLOGY

INAPSINE (droperidol) produces marked tranquilization and sedation. It allays apprehension and provides a state of mental detachment and indifference while maintaining a state of reflex alertness.

INAPSINE produces an antiemetic effect as evidenced by the antagonism of apomorphine in dogs. It lowers the incidence of nausea and vomiting during surgical procedures and provides antiemetic protection in the postoperative period.

INAPSINE potentiates other CNS depressants. It produces mild alpha-adrenergic blockade, peripheral vascular dilatation and reduction of the pressor effect of epinephrine. It can produce hypotension and decreased peripheral vascular resistance and may decrease pulmonary arterial pressure (particularly if it is abnormally high). It may reduce the incidence of epinephrine-induced arrhythmias, but it does not prevent other cardiac arrhythmias.

The onset of action of single intramuscular and intravenous doses is from three to ten minutes following administration, although the peak effect may not be apparent for up to thirty minutes. The duration of the tranquilizing and sedative effects generally is two to four hours, although alteration of alertness may persist for as long as twelve hours.

INDICATIONS AND USAGE

INAPSINE (droperidol) is indicated to reduce the incidence of nausea and vomiting associated with surgical and diagnostic procedures.

CONTRAINDICATIONS

INAPSINE is contraindicated in patients with known or suspected QT prolongation (i.e., QTc interval greater than 440 msec for males or 450 msec for females). This would include patients with congenital long QT syndrome.

INAPSINE (droperidol) is contraindicated in patients with known hypersensitivity to the drug.

INAPSINE is not recommended for any use other than for the treatment of perioperative nausea and vomiting in patients for whom other treatments are ineffective or inappropriate (see WARNINGS).

WARNINGS

INAPSINE should be administered with extreme caution in the presence of risk factors for development of prolonged QT syndrome, such as: 1) clinically significant bradycardia (less than 50 bpm), 2) any clinically significant cardiac disease, 3) treatment with Class I and Class III antiarrhythmics, 4) treatment with monoamine oxidase inhibitors (MAOI's), 5) concomitant treatment with other drug products known to prolong the QT interval (see PRECAUTIONS, Drug Interactions), and 6) electrolyte imbalance, in particular hypokalemia and hypomagnesemia, or concomitant treatment with drugs (e.g., diuretics) that may cause electrolyte imbalance.

Effects on Cardiac Conduction

A dose-dependent prolongation of the QT interval was observed within 10 minutes of droperidol administration in a study of 40 patients without known cardiac disease who underwent extracranial head and neck surgery. Significant QT prolongation was observed at all three dose levels evaluated, with 0.1, 0.175, and 0.25 mg/kg associated with prolongation of median QTc by 37, 44, and 59 msec,

respectively.

Cases of QT prolongation and serious arrhythmias (e.g. torsade de pointes, ventricular arrhythmias, cardiac arrest, and death) have been observed during post-marketing treatment with INAPSINE. Some cases have occurred in patients with no known risk factors and at doses at or below recommended doses. There has been at least one case of nonfatal torsade de pointes confirmed by rechallenge.

Based on these reports, all patients should undergo a 12-lead ECG prior to administration of INAPSINE to determine if a prolonged QT interval (i.e., QTc greater than 440 msec for males or 450 msec for females) is present. If there is a prolonged QT interval, INAPSINE should **NOT** be administered. For patients in whom the potential benefit of INAPSINE treatment is felt to outweigh the risks of potentially serious arrhythmias, ECG monitoring should be performed prior to treatment and continued for 2 to 3 hours after completing treatment to monitor for arrhythmias.

FLUIDS AND OTHER COUNTERMEASURES TO MANAGE HYPOTENSION SHOULD BE READILY AVAILABLE.

As with other CNS depressant drugs, patients who have received INAPSINE (droperidol) should have appropriate surveillance.

It is recommended that opioids, when required, initially be used in reduced doses.

As with other neuroleptic agents, very rare reports of neuroleptic malignant syndrome (altered consciousness, muscle rigidity and autonomic instability) have occurred in patients who have received INAPSINE (droperidol). Since it may be difficult to distinguish neuroleptic malignant syndrome from malignant hyperpyrexia in the perioperative period, prompt treatment with dantrolene should be considered if increases in temperature, heart rate or carbon dioxide production occur.

PRECAUTIONS

General: The initial dose of INAPSINE (droperidol) should be appropriately reduced in elderly, debilitated and other poor-risk patients. The effect of the initial dose should be considered in determining incremental doses.

Certain forms of conduction anesthesia, such as spinal anesthesia and some peridural anesthetics, can alter respiration by blocking intercostal nerves and can cause peripheral vasodilatation and hypotension because of sympathetic blockade. Through other mechanisms (see CLINICAL PHARMACOLOGY), INAPSINE can also alter circulation. Therefore, when INAPSINE is used to supplement these forms of anesthesia, the anesthetist should be familiar with the physiological alterations involved, and be prepared to manage them in the patients elected for these forms of anesthesia.

If hypotension occurs, the possibility of hypovolemia should be considered and managed with appropriate parenteral fluid therapy. Repositioning the patient to improve venous return to the heart should be considered when operative conditions permit. It should be noted that in spinal and peridural anesthesia, tilting the patient into a head-down position may result in a higher level of anesthesia than is desirable, as well as impair venous return to the heart. Care should be exercised in moving and positioning of patients because of a possibility of orthostatic hypotension. If volume expansion with fluids plus these other countermeasures do not correct the hypotension, then the administration of pressor agents other than epinephrine should be considered. Epinephrine may paradoxically decrease the blood pressure in patients treated with INAPSINE due to the alpha-adrenergic blocking action of INAPSINE.

Since INAPSINE may decrease pulmonary arterial pressure, this fact should be considered by those who conduct diagnostic or surgical procedures where interpretation of pulmonary arterial pressure measurements might determine final management of the patient. Vital signs and ECG should be monitored routinely.

When the EEG is used for postoperative monitoring, it may be found that the EEG pattern returns to

normal slowly.

Impaired Hepatic or Renal Function: INAPSINE should be administered with caution to patients with liver and kidney dysfunction because of the importance of these organs in the metabolism and excretion of drugs.

Pheochromocytoma: In patients with diagnosed/suspected pheochromocytoma, severe hypertension and tachycardia have been observed after the administration of INAPSINE (droperidol).

Drug Interactions:

Potentially Arrhythmogenic Agents: Any drug known to have the potential to prolong the QT interval should not be used together with INAPSINE. Possible pharmacodynamic interactions can occur between INAPSINE and potentially arrhythmogenic agents such as class I or III antiarrhythmics, antihistamines that prolong the QT interval, antimalarials, calcium channel blockers, neuroleptics that prolong the QT interval, and antidepressants.

Caution should be used when patients are taking concomitant drugs known to induce hypokalemia or Hypomagnesemia as they may precipitate QT prolongation and interact with INAPSINE. These would include diuretics, laxatives and supraphysiological use of steroid hormones with mineralocorticoid potential.

CNS Depressant Drugs: Other CNS depressant drugs (e.g., barbiturates, tranquilizers, opioids and general anesthetics) have additive or potentiating effects with INAPSINE. Following the administration of INAPSINE, the dose of other CNS depressant drugs should be reduced.

Carcinogenesis, Mutagenesis, Impairment of Fertility: No carcinogenicity studies have been carried out with INAPSINE. The micronucleus test in female rats revealed no mutagenic effects in single oral doses as high as 160 mg/kg. An oral study in rats (Segment I) revealed no impairment of fertility in either male or females at 0.63, 2.5 and 10 mg/kg doses (approximately 2.9 and 36 times maximum recommended human iv/im dosage).

Pregnancy: Category C: INAPSINE administered intravenously has been shown to cause a slight increase in mortality of the newborn rat at 4.4 times the upper human dose. At 44 times the upper human dose, mortality rate was comparable to that for control animals. Following intramuscular administration, increased mortality of the offspring at 1.8 times the upper human dose is attributed to CNS depression in the dams who neglected to remove placentae from their offspring. INAPSINE has not been shown to be teratogenic in animals. There are no adequate and well-controlled studies in pregnant women. INAPSINE should be used during pregnancy only if the potential benefit justifies the potential risk to the fetus.

Labor and Delivery: There are insufficient data to support the use of INAPSINE in labor and delivery. Therefore, such use is not recommended.

Nursing Mothers: It is not known whether INAPSINE is excreted in human milk. Because many drugs are excreted in human milk, caution should be exercised when INAPSINE is administered to a nursing mother.

Pediatric Use: The safety of INAPSINE in children younger than two years of age has not been established.

ADVERSE REACTIONS

QT interval prolongation, torsade de pointes, cardiac arrest, and ventricular tachycardia have been reported in patients treated with INAPSINE. Some of these cases were associated with death. Some cases occurred in patients with no known risk factors, and some were associated with droperidol doses at or below recommended doses.

Physicians should be alert to palpitations, syncope, or other symptoms suggestive of episodes of

irregular cardiac rhythm in patients taking INAPSINE and promptly evaluate such cases (see WARNINGS, Effects on Cardiac Conduction).

The most common somatic adverse reactions reported to occur with INAPSINE (droperidol) are mild to moderate hypotension and tachycardia, but these effects usually subside without treatment. If hypotension occurs and is severe or persists, the possibility of hypovolemia should be considered and managed with appropriate parenteral fluid therapy.

The most common behavioral adverse effects of INAPSINE (droperidol) include dysphoria, postoperative drowsiness, restlessness, hyperactivity and anxiety, which can either be the result of an inadequate dosage (lack of adequate treatment effect) or of an adverse drug reaction (part of the symptom complex of akathisia).

Care should be taken to search for extrapyramidal signs and symptoms (dystonia, akathisia, oculogyric crisis) to differentiate these different clinical conditions. When extrapyramidal symptoms are the cause, they can usually be controlled with anticholinergic agents.

Postoperative hallucinatory episodes (sometimes associated with transient periods of mental depression) have also been reported.

Other less common reported adverse reactions include anaphylaxis, dizziness, chills and/or shivering, laryngospasm, and bronchospasm.

Elevated blood pressure, with or without pre-existing hypertension, has been reported following administration of INAPSINE combined with SUBLIMAZE (fentanyl citrate) or other parenteral analgesics. This might be due to unexplained alterations in sympathetic activity following large doses; however, it is also frequently attributed to anesthetic or surgical stimulation during light anesthesia.

OVERDOSAGE

Manifestations: The manifestations of INAPSINE (droperidol) overdose are an extension of its pharmacologic actions and may include QT prolongation and serious arrhythmias (e.g., torsade de pointes) (see BOX WARNING, WARNINGS, and PRECAUTIONS).

Treatment: In the presence of hypoventilation or apnea, oxygen should be administered and respiration should be assisted or controlled as indicated. A patent airway must be maintained; an oropharyngeal airway or endotracheal tube might be indicated. The patient should be carefully observed for 24 hours; body warmth and adequate fluid intake should be maintained. If hypotension occurs and is severe or persists, the possibility of hypovolemia should be considered and managed with appropriate parenteral fluid therapy (see PRECAUTIONS).

If significant extrapyramidal reactions occur in the context of an overdose, an anticholinergic should be administered.

The intravenous Median Lethal Dose of INAPSINE is 20 to 43 mg/kg in mice; 30 mg/kg in rats; 25 mg/kg in dogs and 11 to 13 mg/kg in rabbits. The intramuscular Median Lethal Dose of INAPSINE is 195 mg/kg in mice; 104 to 110 mg/kg in rats; 97 mg/kg in rabbits and 200 mg/kg in guinea pigs.

DOSAGE AND ADMINISTRATION

Dosage should be individualized. Some of the factors to be considered in determining the dose are age, body weight, physical status, underlying pathological condition, use of other drugs, type of anesthesia to be used and the surgical procedure involved.

Vital signs and ECG should be monitored routinely.

Adult dosage: The maximum recommended initial dose of INAPSINE is 2.5 mg IM or slow IV. Additional 1.25 mg doses of INAPSINE may be administered to achieve the desired effect. However, additional doses should be administered with caution, and only if the potential benefit outweighs the

potential risk.

Children's dosage: For children two to 12 years of age, the maximum recommended initial dose is 0.1 mg/kg. taking into account the patient's age and other clinical factors. However, additional doses should be administered with caution, and only if the potential benefit outweighs the potential risk.

See WARNINGS and PRECAUTIONS for use of INAPSINE with other CNS depressants and in patients with altered response.

Parenteral drug products should be inspected visually for particulate matter and discoloration prior to administration, whenever solution and container permit. If such abnormalities are observed, the drug should not be administered.

HOW SUPPLIED

INAPSINE® (droperidol) Injection is available as:

NDC 17478-010-01, 2.5 mg/mL, 1 mL ampules in packages of 10

NDC 17478-010-02, 2.5 mg/mL, 2 mL ampules in packages of 10

NDC 17478-531-01, 2.5 mg/mL, 1 mL vials in packages of 25

NDC 17478-531-02, 2.5 mg/mL, 2 mL vials in packages of 25

Storage: Store at 20° to 25°C (68° to 77°F) [see USP Controlled Room Temperature]. Protect from light.

REFERENCES

1. Saarnivarra L, Klemola UM, Lindgren L, et al. QT interval of the ECG, heart rate and arterial pressure using propofol, methohexital or midazolam for induction of anesthesia. *Acta Anaesthesiol Scand* 1990; 34: 276-81
2. Schmeling WT, Warltier DC, McDonald DJ, et al. Prolongation of the QT interval by enflurane, isoflurane and haloflurane in humans. *Anesth Analg* 1991; 72: 137-44.
3. Spath G. Torsade des pointes oder die andere Ursache des plötzlichen Herztodes. Wien: Ueberreuter, 1998.
4. Riley DC, Schmeling WT, Al-Wafhiqui MH, et al. Prolongation of the QT-interval by volatile anesthetics in chronically instrumented dogs. *Anesth Analg* 1988; 67: 741-9.
5. McConachie I, Keaventy JP, Healy TF, et al. Effects of anaesthesia on the QT-interval. *Br J Anaesth* 1989; 63: 558-60.
6. Lawrence KR, Nasraway SA. Conduction disturbances associated with administration of butyrophenone antipsychotic in the critically ill: a review of the literature. *Pharmacother* 1997; 17(3): 531-7.
7. Lischke V, Behne M, Doelken P, et al. Droperidol causes a dose-dependent prolongation of the QT interval. *Anesth Analg* 1994; 79: 983-6.

Akorn

Manufactured by: **Akorn, Inc.**

Lake Forest, IL 60045

DPA0N Rev. 10/11

Principal Display Panel Text for Container Label:

NDC 17478-010-02

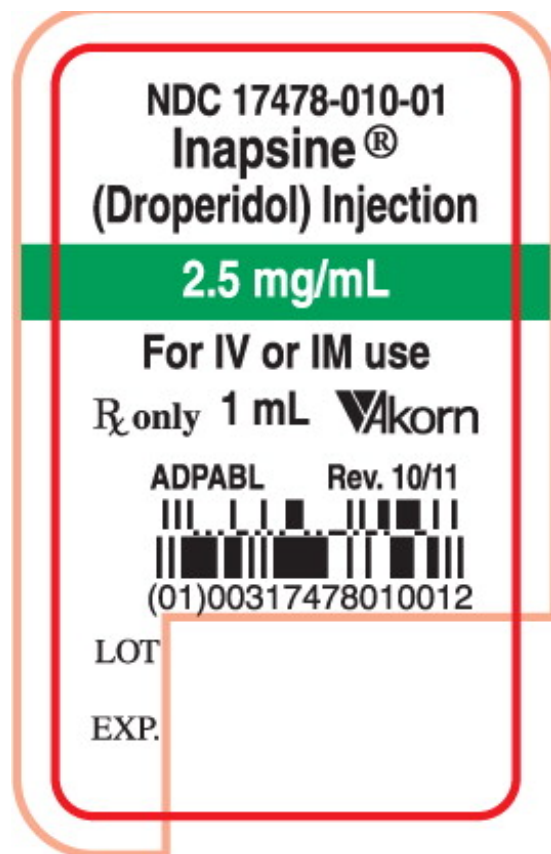
Inapsine®

(Droperidol) Injection

5 mg/2 mL (2.5 mg/mL)

For IV or IM Use

Rx only 2 mL Akorn Logo



Principal Display Panel Text for Carton Label:

NDC 17478-010-02

Inapsine®

(Droperidol) Injection

5 mg/2 mL (2.5 mg/mL)

For Intravenous or Intramuscular Use

10 Ampules (2 mL each)

Rx only Not to be sold except as an unbroken box. Akorn Logo

LOT

EXP.

10 Ampules (1 mL each)

Inapsine®
(Droperidol) Injection

NDC 17478-010-01

Inapsine® (Droperidol) Injection

2.5 mg/mL

For Intravenous or Intramuscular Use

10 Ampules (1 mL each)

1 mL

Inapsine®
(Droperidol) Injection

Rx only

Not to be sold except as an unbroken box.

Akorn

Inapsine® (Droperidol) Injection

Each mL contains:
Droperidol 2.5 mg. Lactic acid for pH adjustment (3.4 ± 0.4).

Usual Dosage: See package insert for dosage and other information.

Storage: Store at 20° to 25°C (68° to 77°F) [see USP Controlled Room Temperature].
Protect from light.

For your convenience in recording Inapsine® use

INITIAL/DATE

1	_____
2	_____
3	_____
4	_____
5	_____
6	_____
7	_____
8	_____
9	_____
10	_____

N 3 17478-010-01 2

Manufactured by:
Akorn, Inc.
Lake Forest, IL 60045

ADPABC Rev. 10/11

INAPSINE

droperidol injection

Product Information

Product Type	HUMAN PRESCRIPTION DRUG	Item Code (Source)	NDC:17478-010
Route of Administration	INTRAVENOUS, INTRAMUSCULAR	DEA Schedule	

Active Ingredient/Active Moiety

Ingredient Name

Basis of Strength

Strength

Droperidol (UNII: O9U0F09D5X) (Droperidol - UNII:O9U0F09D5X)			Droperidol	2.5 mg in 1 mL
Inactive Ingredients				
Ingredient Name			Strength	
Lactic Acid (UNII: 33X04XA5AT)				
Packaging				
#	Item Code	Package Description	Marketing Start Date	Marketing End Date
1	NDC:17478-010-01	10 in 1 CARTON		
1		1 mL in 1 AMPULE		
2	NDC:17478-010-02	10 in 1 CARTON		
2		2 mL in 1 AMPULE		
Marketing Information				
Marketing Category		Application Number or Monograph Citation	Marketing Start Date	Marketing End Date
NDA		NDA016796	07/01/1996	

INAPSINE				
droperidol injection				
Product Information				
Product Type	HUMAN PRESCRIPTION DRUG		Item Code (Source)	NDC:17478-531
Route of Administration	INTRAVENOUS, INTRAMUSCULAR		DEA Schedule	
Active Ingredient/Active Moiety				
Ingredient Name			Basis of Strength	Strength
Droperidol (UNII: O9U0F09D5X) (Droperidol - UNII:O9U0F09D5X)			Droperidol	2.5 mg in 1 mL
Inactive Ingredients				
Ingredient Name				Strength
Lactic Acid (UNII: 33X04XA5AT)				
Packaging				
#	Item Code	Package Description	Marketing Start Date	Marketing End Date
1	NDC:17478-531-01	25 in 1 CARTON		
1		1 mL in 1 VIAL		
2	NDC:17478-531-02	25 in 1 CARTON		

2	2 mL in 1 VIAL		
Marketing Information			
Marketing Category	Application Number or Monograph Citation	Marketing Start Date	Marketing End Date
NDA	NDA016796	07/01/1996	

Labeler - Akorn, Inc. (062649876)

Establishment			
Name	Address	ID/FEI	Business Operations
Akorn, Inc.		155135783	MANUFACTURE, REPACK, ANALYSIS, LABEL, PACK, RELABEL, STERILIZE

Revised: 12/2011

Akorn, Inc.